

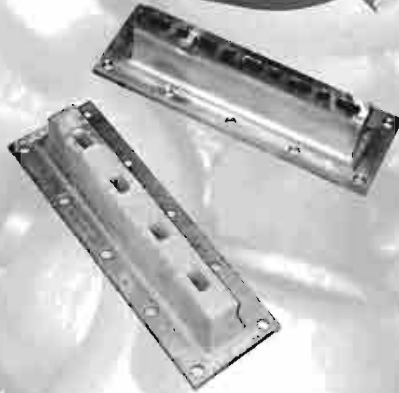
**TEMPERFORM CORPORATION**



**TEMPCAST**

Heat and Corrosion Resistant Castings

**TEMPERFORM CORPORATION**



**TEMPCAST**

Heat and Corrosion Resistant Castings

# TEMPERFORM CORPORATION

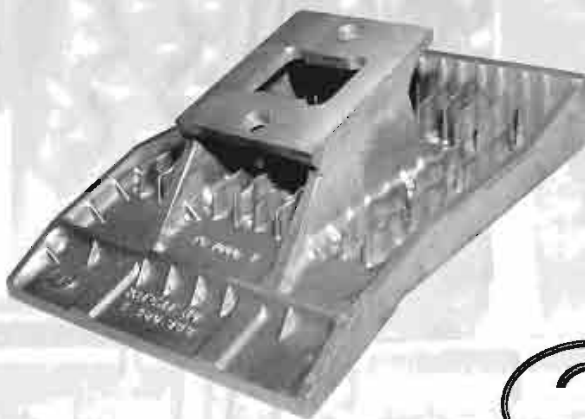
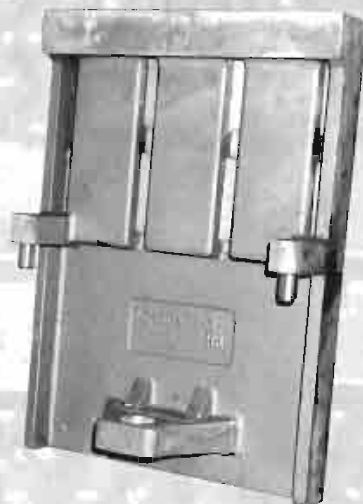
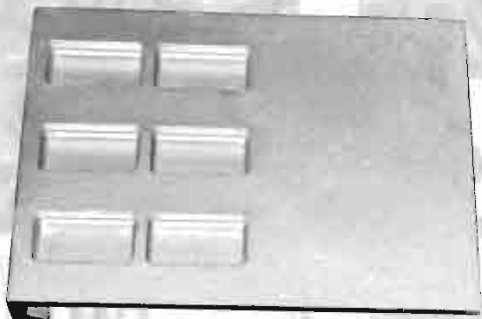


TEMPCAST

Heat and Corrosion Resistant Castings

Preheater

**TEMPERFORM CORPORATION.**

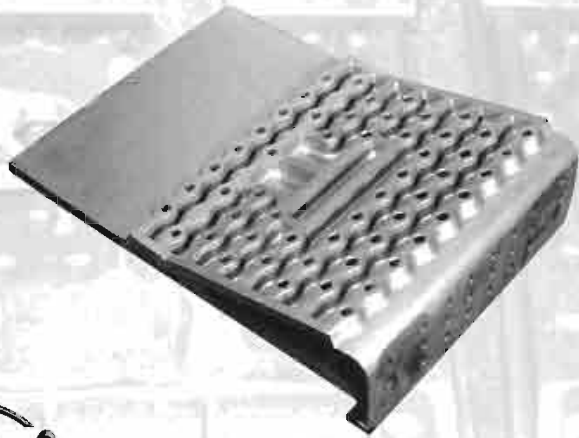
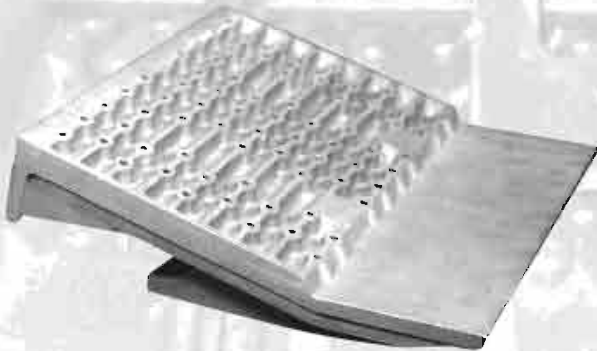
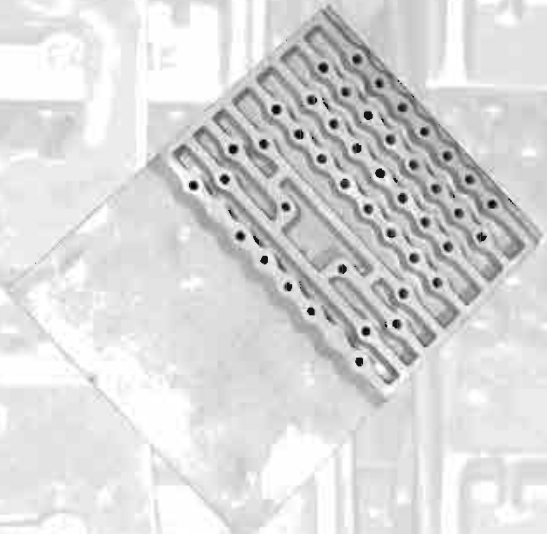
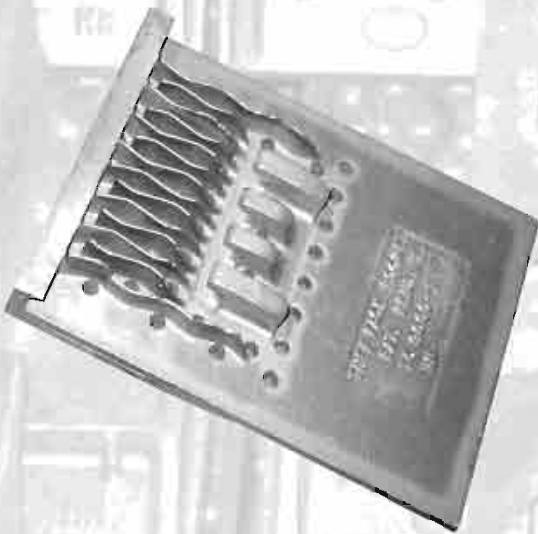
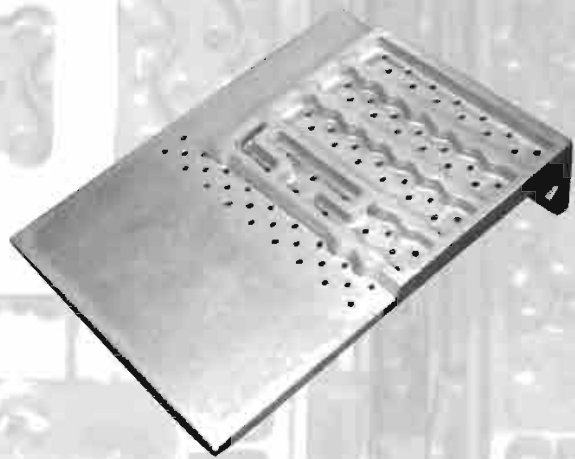
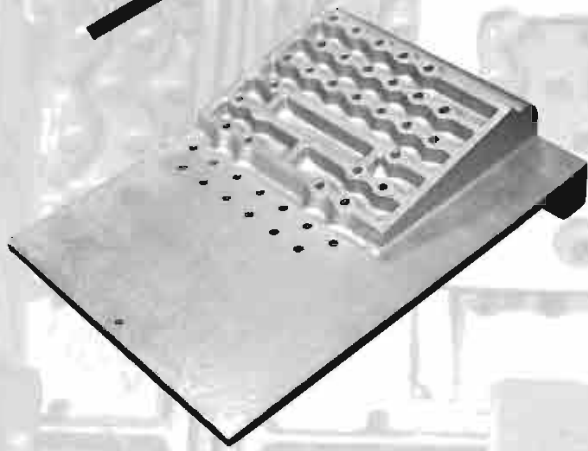


**TEMPCAST.**

Heat and Corrosion Resistant Castings

Cooler  
Grates

**TEMPERFORM CORPORATION.**

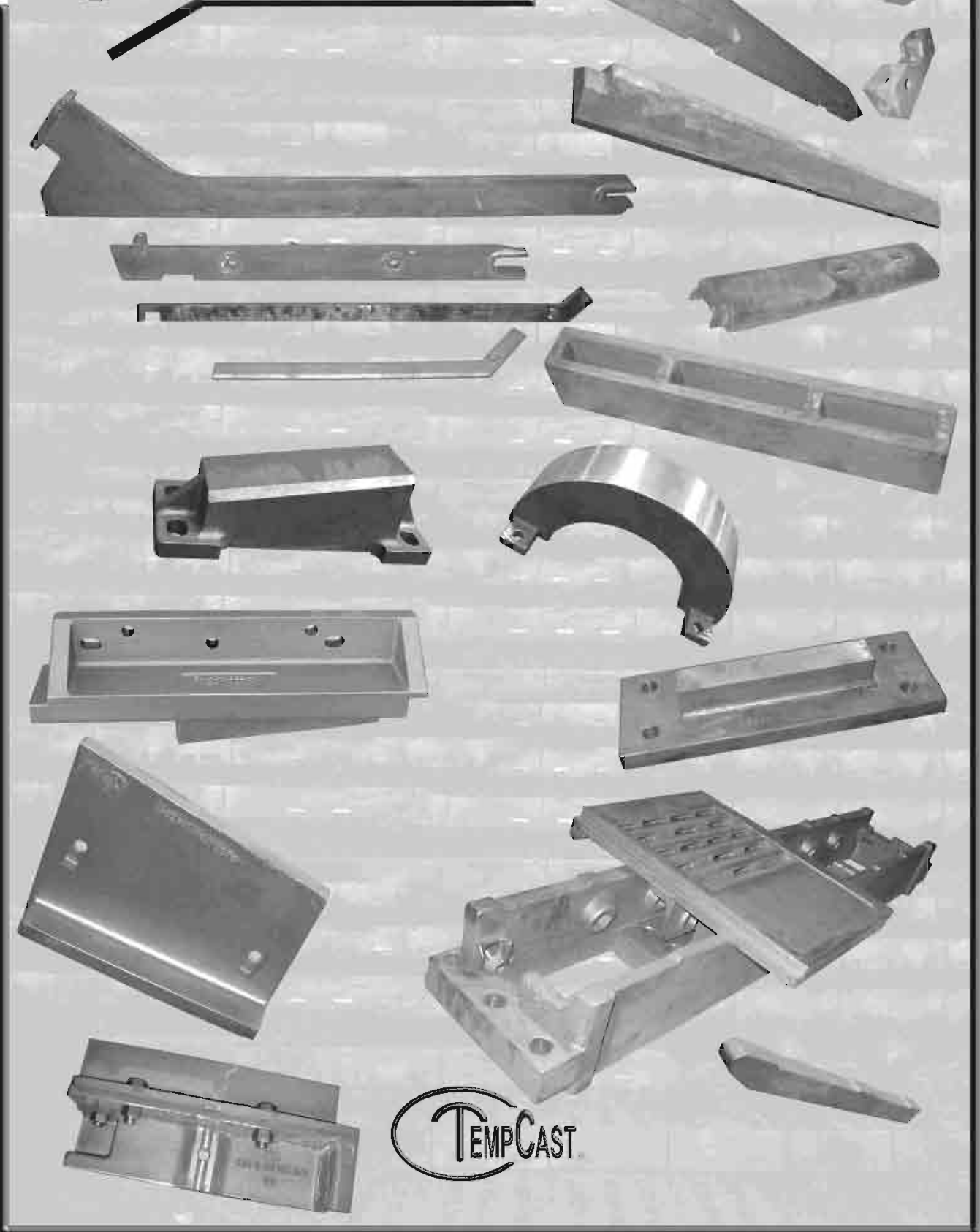


**TEMPCAST.**

Heat and Corrosion Resistant Castings

Tuff-Face  
Grates

**TEMPERFORM CORPORATION**



**TEMPCAST**

Cooler  
Components

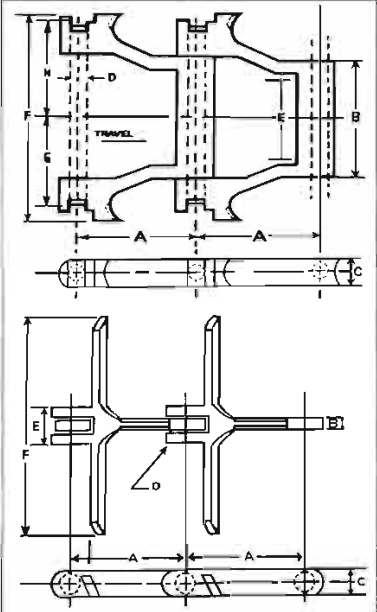
# TEMPERFORM CORPORATION



**Introducing**  
The Taper Lok™ Pin  
(an exclusive from TemperForm)

**FEATURES:**  
Dramatic reduction in pin wear.  
Pin is locked cannot turn  
Extends link life

TC-410TF



	Pitch in Inches A	Barrel Length B	Side Bar Height C	Pin Diam. D	Max Sprkt Width E	Max O.A. Width F	Pin Head To C G	Pin End To C H
TC-400TF	9"	8 13/16"	2 7/8"	1 1/4"	6 1/2"	18 3/8"	6 13/16"	7"
TC-401TF	9"	8 13/16"	2 7/8"	1 1/4"	6 1/2"	14 1/4"	6 13/16"	7"
TC-410TF	9"	12 5/8"	2 7/8"	1 1/4"	10 1/4"	18 1/8"	8 15/16"	9 1/16"
TC-412TF	9"	8 5/16"	2 7/8"	1 1/4"	6"	12 5/8"	5 7/16"	5 9/16"
TC-415	9"	5"	2 1/2"	1 1/4"	2 3/4"	10"	4"	4 1/4"
TC-416	9"	8 1/4"	2 1/2"	1 1/4"	6"	12"	5 7/8"	5 15/16"
TC-420	9"	12 7/16"	2 1/2"	1 1/4"	9 3/4"	16 5/8"	8 1/8"	8 1/8"
TC-430TF	12"	17 13/16"	3 1/8"	1 3/8"	14 1/2"	28 1/4"	11 1/2"	12"

	Pitch in Inches A	Barrel Length B	Side Bar Height C	Pin Diam. D	Max Body Width E	Max O.D. Width F
TC-460	8 1/2"	1"	2 7/8"	1 3/4"	2 5/8"	22"
TC-461	8 1/2"	1"	2 7/8"	1 3/4"	2 5/8"	11 1/2"



Heat and Corrosion Resistant Castings

Drag Chains

# TEMPERFORM CORPORATION

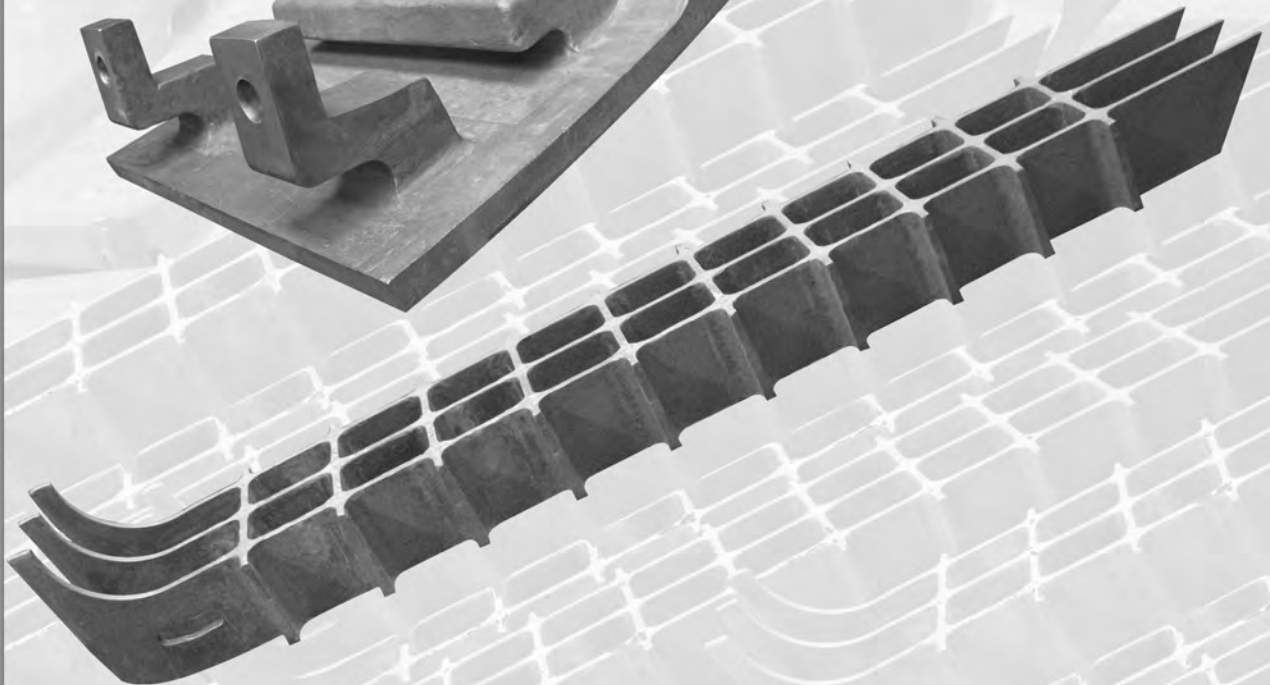


TEMPCAST

Heat and Corrosion Resistant Castings

Wear

**TEMPERFORM CORPORATION**



**TEMPCAST**

Heat and Corrosion Resistant Castings